

This month, we're going to take an in-depth look at one of the most popular social networking services online, Twitter.

It's OK to be sick and tired of hearing about Twitter. It may be the world's most overhyped technology, the latest in an ever-lengthening list of overhyped technologies and cultural techno-fads stretching back to CB radio. The real question is whether Twitter is more than just the latest info-thing. Does it "work" in any meaningful way — as a news-dissemination channel, a reporting and source-building tool, a promotional platform? Or is it merely a banal, narcissistic and often addictive time suck?

You may be skeptical about what a 140-character tweet can do for you, but the fact is, millions of people find the service useful and use it every day. But, you do not need to be wired into Twitter to do something interesting with it.

As one example, Twitter can be a kind of community organizing tool by virtue of its real-time nature. Unlike texting on a smartphone or e-mailing, tweeting is immediate and responsive. Hashtags are just one of the tools that bring coherence to what can seem like Twitter's tower of Babel. Sites such as Tweetcloud.com and Twitscoop.com, which track the hottest topics on Twitter, are like police scanners for social media networks. They offer a real-time, filtered glimpse into what people are buzzing about.

If you have not yet fallen into the Twitter trench, here's your chance to see what it's all about and find out what it does beyond its simple 140-character messaging. We'll take a look at what you need to get on Twitter and take advantage of its organizing tools.

As always, there'll be good food, good fun, and good friends all around. Tweet your friends and tell them to come to the Main Meeting!



Raffle!

This month, Lexar 32 Gb 3.0 Flash Drive, with retractable connector and thumb slide • Stores and transfers content faster with SuperSpeed USB 3.0 technology • Speeds up to 3x faster than standard JumpDrive® USB 2.0 drives • Retractable connector with convenient thumb slide • Colorful capacity options (32G is orange) • Reliably stores and transfers photos, videos, files, and more • Compatible with PC and Mac® systems • Three-year limited warranty. AND, it's YOURS for the price of a ticket.

Tickets are \$5 each, available where you sign in. Need not be present to win.



What's Inside:

Newsletter Information..... 2	Map & Directions to Main Meeting..... 3	Member Information..... 9
PC Community Officers..... 2	Review: Samsung 840 120GB SSD..... 4	Penguin Partition..... 10
About PC Community..... 2	Make Windows 8 Your Own..... 6	Main & Exec. Meeting Minutes..... 11
PCC Announcements..... 3	SIG Meetings..... 9	PCC Events Calendar..... 13

About PC Community



EDITOR
Elsie Smith
 lcms@pacbell.net

Associate Editor: Jan Fagerholm

Online Editor: Diane George

Contributors: Bayle Emlein, Jan Fagerholm, Diane George, Chuck Horner and Elsie Smith.

Deadline: Copy must be submitted no later than the second Saturday prior to the Main Meeting. Check the Newsletter calendar for the date. Submissions should be made by e-mail to the Editor, **lcms@pacbell.net**. Advertising rates are available from the Editor.

Contents © 2013 PC Community, except as noted. Permission for reproduction in whole or in part is granted to other computer user groups for internal, non-profit use, provided credit is given to PC Community and to the authors of the material.



Adobe InDesign CS2 is used to publish
 PCC News

PCC Officers and Staff

- President — Chuck Horner**
 churck@comcast.net (510) 589-9677
- Executive Vice President — Sally Holt**
 nole62@pacbell.net (510) 785-3593
- Treasurer — Tom Smith**
 smith-tf@pacbell.net (510) 545-2077
- Secretary — Bayle Emlein**
 pcc@ix.netcom.com (510) 652-1726
- VP Clubhouse — Sidney Jordan**
 sjordan321@aol.com (510) 886-8188
- VP Marketing — New VP Needed**
 you@righthere.com (510) 123-4567
- VP Membership — Jan Fagerholm**
 pcc4me@gmail.com (510) 213-8421
- VP Newsletter — Elsie Smith**
 lcms@pacbell.net (510) 545-2077
- VP Programs — New VP Needed**
 you@righthere.com (510) 123-4567
- VP Special Projects — Bayle Emlein**
 pcc@ix.netcom.com (510) 652-1726
- Webmaster — Diane George**
 digeorge38@hotmail.com (510) 538-2449
- APCUG Representative — Diane George**
 digeorge38@hotmail.com (510) 538-2449
- Projector Coordinator — Jan Fagerholm**
 pcc4me@gmail.com (510) 213-8421

Board of Directors

- Bayle Emlein**
 pcc@ix.netcom.com (510) 652-1726
- Jan Fagerholm**
 pcc4me@gmail.com (510) 213-8421
- Sally Holt**
 nole62@pacbell.net (510) 785-3593
- Chuck Horner**
 churck@comcast.net (510) 589-9677
- Elsie Smith**
 lcms@pacbell.net (510) 545-2077

Clubhouse Information

PC Clubhouse has been closed indefinitely. Refurbished computers are still available on request. Please contact PC Community, 26799 Contessa Street, Hayward, CA 94545.

PC Community is a computer users group for people who wish to expand their knowledge and experience of personal computers and software. This is accomplished through monthly general meetings of the full membership where major industry vendors present information, and through smaller focus groups (Special Interest Groups, or SIGs) where members meet to share common computer interests. The group's monthly Main Meeting takes place at Calvary Baptist Church, 28924 Ruus Road, Hayward, at 7:30 P.M. on the first Friday of each month.

PC Community is dedicated to community service, providing enabling technology to people with special needs, working in the community to obtain computer equipment, and working with other computer groups to help people extend their lives through computer technology.

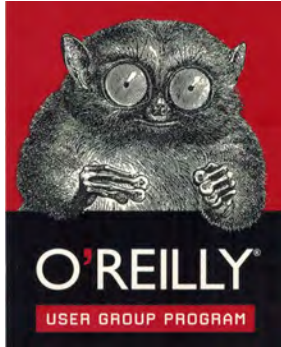
PC Community has a Web site at <http://www.pcc.org>.

Membership dues are \$40.00 per year. Dues for educational and seniors (65 and over) are \$25.00 per year. Call 510-213-8421 for more information, or write to PC Community at the address on this page.



PCC is a member of the Association
 of Personal Computer User Groups
 (APCUG)

PCC Announcements



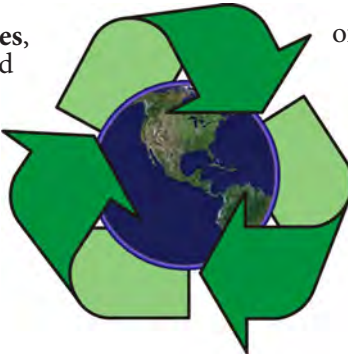
PCC is registered in the O'Reilly User Group Program, qualifying us to receive review copies of O'Reilly, Microsoft Press, Pragmatic, No Starch, Rocky Nook and SitePoint products. User group members also qualify for savings of 40% off print and 50% off ebooks. E-mail Elsie Smith, lcms@pacbell.net, for discount code. All orders over \$29.95 qualify for free shipping. Purchase at www.oreilly.com/store. O'Reilly also donates books and other promotional items to PCC.

What books would you like to see on our door prize table? Go to www.oreilly.com and pick the book that interests you. Then e-mail Elsie Smith, lcms@pacbell.net, with the entire title so I can request it from O'Reilly.

O'Reilly Media, Inc. - <http://www.oreilly.com> - (800) 889-8969

PCC Recycle Program is Back, Bigger and Better!

Your used **toner cartridges**, old **cell phones**, used **inkjet cartridges**, old **PDA**s and defunct **iPods** are valuable. Don't toss them in your trash to be used as landfill. They are worth something to PCC and other groups, either in the form of exchange or as discount on products at some local retailers. This not only helps PCC, but also helps our community. You can drop any



of these items off at a Main Meeting or an EC Meeting. Do your part for PCC and your community! Keep the environment clean by taking a few extra moments to recycle these items with PCC.

contact:
Chuck Horner
churck@comcast.net
510-589-9677

Directions to the PCC Main Meeting

From All Directions: take 880 to the Tennyson Road exit in Hayward. Take the exit toward the hills. Proceed northeast on Tennyson Rd. about 0.7 mile to the 5th stoplight. This will be Ruus Road.

Turn right on Ruus Road and proceed southeast for about 0.4 mile. Look for Calvary Baptist Church on your left.

Turn left into the driveway into the parking lot. Parking is available anywhere from the driveway to the back of the lot.

Look for the PCC signs.



PCC News Goes All Digital!

Notice! The last printed Newsletter was mailed in December, 2012. At the November, 2012 Main Meeting, the cost of printing the Newsletter was discussed and the Executive Committee decided to discontinue the printed version in order to remove that expense. Members now receive an e-mail the week before the Main Meeting with a PDF version of the Newsletter as an attachment, and a Web link with a link to the Newsletter on the PCC Web site (<http://www.pcc.org/index.php/newsletters>) for those who have problems with e-mail attachments. To continue receiving PCC News, be sure that we have your preferred and current e-mail address. You can do this by using the e-mail link on the PCC Web site (<http://www.pcc.org/index.php/contact-pcc>) that sends an e-mail to the Executive Committee. Make sure it includes the e-mail address where you would prefer receiving the Newsletter.

SAMSUNG 840 120GB SSD

Non-Spinning Storage Speeds Access

by Jan Fagerholm, Solid State Speedster

The Bullet Points: The Samsung 840 SSD (Solid State Drive) is a flash memory storage device configured as a hard drive. It comes in 2.5" physical drive format and is a drop-in replacement for a mechanical hard drive. It offers more speed and less power consumption than a mechanical hard drive.

What's In The Box: Samsung 840 SSD, data transfer utility CD, single sheet quick installation guide,

The Review: Storage devices are a necessary component of modern computers. In current PC architecture, the device where you store all your stuff is a mechanical hard drive. It's where the operating system, applications, and all your data are kept when the computer is off. In modern operating systems (OSs), it's also where the stuff that won't fit into memory resides while the OS is running. In Windows it's the page file (pagefile.sys); In Linux, it's the swap file (Linux swap file, duh!) and in Macintosh OS X its[??] The point is that all modern OSs have some provision for storing stuff that won't fit into memory but is easily available while running. Historical reasons for this architecture is that RAM memory is expensive and hard drive storage is cheap. (Price a 1 terabyte hard drive, then price 1 terabyte of RAM.)

Recent advances in flash memory are beginning to change this equation. Look at the capacity and price of flash drives, and you will ask, "why can't I use a flash drive instead of a hard drive?" That's basically what a SSD drive is.

Bear with me while I explain why this is important. There is a hierarchy of speed in modern PC architecture. Fastest is the CPU, which does all the actual work. Next is RAM, where programs run and where all the data the CPU is working on is temporarily stored. Slowest is the hard drive, where everything is stored on a permanent basis (non-volatile memory is the current buzz word for this). The CPU waits for RAM because RAM runs at about 1/3 the speed of the CPU. The CPU and RAM wait for the

hard drive because it is 10 times slower than both of them. Every time the CPU asks for data from the hard drive, it spends 90 percent of its time waiting for the hard drive to deliver it. This is particularly acute in Windows, because it stores so many of the system files in the page file regardless of how much RAM you have. To use an overworked metaphor, as a chain is no stronger than its weakest link, a PC is no faster than its hard drive.

Every technoid has predicted (and fervently wished for) the demise of the hard drive because it is so much slower than the other system components. Hard drives remain with us because they have managed to grow much bigger while getting much cheaper, thus remaining economically viable. They have not, however, improved much in speed. They find themselves the principle storage device in PCs today for economic reasons.

SSD drives are beginning to change this. While flash memory technology is still considerably slower than RAM technology, it is considerably faster than hard drive technology. As with so many things in real life, it's a matter of cost. As flash



Samsung 840 120GB SSD

memory technology improves, it gets into a price range where the speed increase is worth the extra cost. Not just to technophiles, but to manufacturers, who are beginning to build in small SSD drives as cache for the hard drive, considerably improving system performance. Replacing the hard drive in a laptop with a SSD drive gives the best performance increase you can buy.

I've installed SSD drives of different brands for several clients, but my own choice of the Samsung 840 was serendipitous. An open box price of half the normal



retail price made me move on it. My own experience is that there is little practical difference between different makes and models: the decision on the Samsung 840 was based solely on price.

Installation is simple. SSDs are a drop-in replacement for the 2.5" hard drives found in laptops. I used Acronis Disk Director to copy the partitions from the hard drive to the SSD drive, so the SSD went in ready to boot.

So what kind of a speedup did I get? Thought you'd never ask. Times below are on a Dell Latitude e6510 with an Intel Core i5 CPU at 2.6 GHz, 6GB RAM and SATA2

interface. The SSD is replacing a "performance" hard drive, a 7200 RPM Western Digital Black. (Times are first startup of each application. Stopwatch and thumb used for timing. Times are approximate as thumb twitching on stopwatch may be off a couple of hundredths of a second. Excessive use of stopwatch may lead to joint pain in thumb. Object in mirror are closer than they appear.)

Some common times look like this:

Operation	SSD	hard drive
start Windows 8	10 sec.	16 sec.
start Photoshop CS6	5 sec.	16 sec.
start InDesign CS6	20 sec.	52 sec.
start CorelDRAW X6	3.5 sec.	12 sec.
start Acrobat 11	instant	3.5 sec.
start WordPerfect X6	2 sec.	5.5 sec.
start MS Word 2013	1 sec.	3.5 sec.
start LibreOffice Writer	2 sec.	4 sec.
start Firefox	2.5 sec.	10 sec.
start Chrome	1 sec.	4 sec.

I run Linux on this machine as well, and the SSD has transformed it from merely speedy to nearly instantaneous for everything. The improvement is dramatic.

A side benefit for my laptop is increased battery life: it's added 45 minutes to battery endurance. That, and it runs cooler than the hard drive it replaced.

What's next? Well, the SSD has brought the performance level of my laptop up to the level of my desktop machine and is the best \$50 I have spent for computer parts in a long time. The next step is an SSD for my desktop computer large enough to hold Windows and three Linux installations and delegate the hard drive to data storage. That should inject new life into my three year old desktop machine and surpass performance levels of newer desktop PCs with hard drives.

Now, if only they would invent a SSD replacement for optical drives. . .

Product Information

Samsung 840 129GB SSD

Web price \$99

Samsung Electronics America
85 Challenger Road
Ridgefield Park, NJ 07660
1-800-SAMSUNG
www.samsung.com

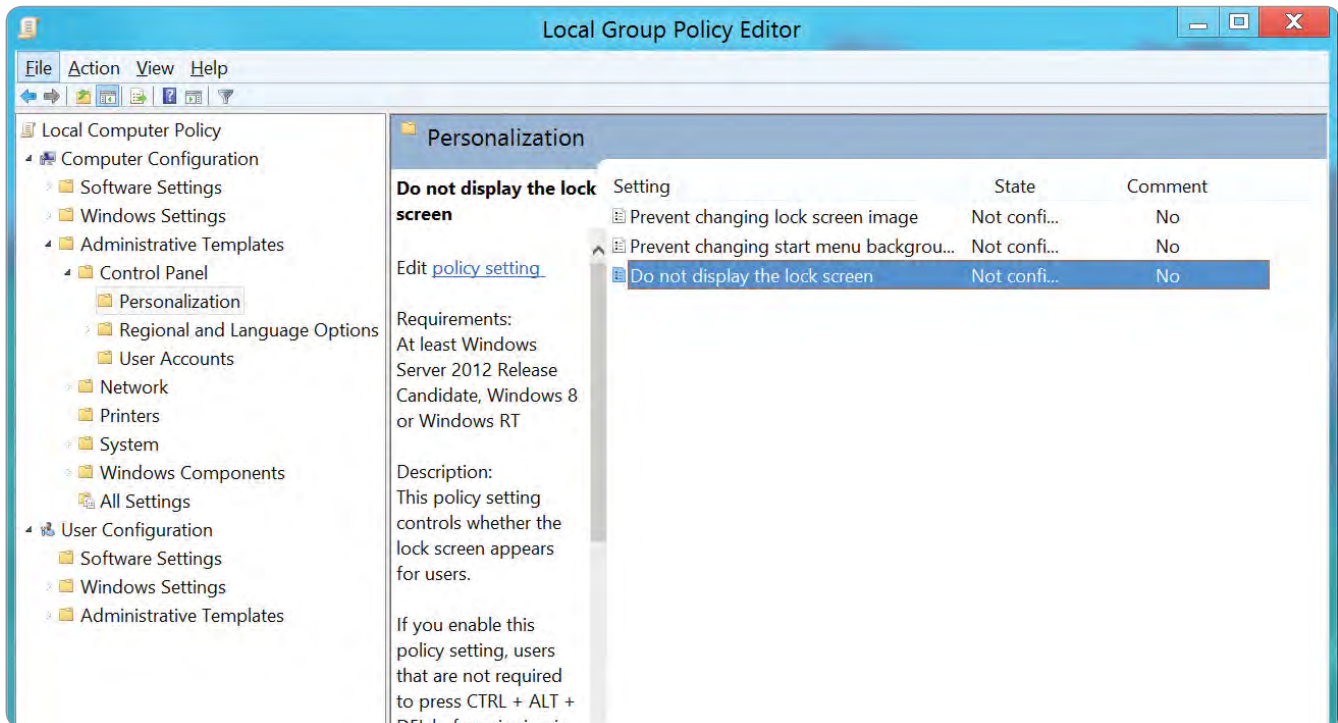


Make Windows 8 Your Own

How To Set Up & Personalize Your New OS

Copyright by Sandhills Publishing Company 2013. All rights reserved. Visit <http://www.smartcomputing.com>

You've removed the shrink wrap, loaded the disc into your optical drive, and installed Windows 8. Now what? This article will take you through a handful of procedures that will help make Windows 8 more accessible, user-friendly, and fun to use.



Disabling the Lock Screen lets you log in and begin using your Windows 8-based PC, tablet, or laptop more quickly. However, doing so defeats one of Windows 8's security measures, so be sure you're willing to sacrifice some security for a little convenience.

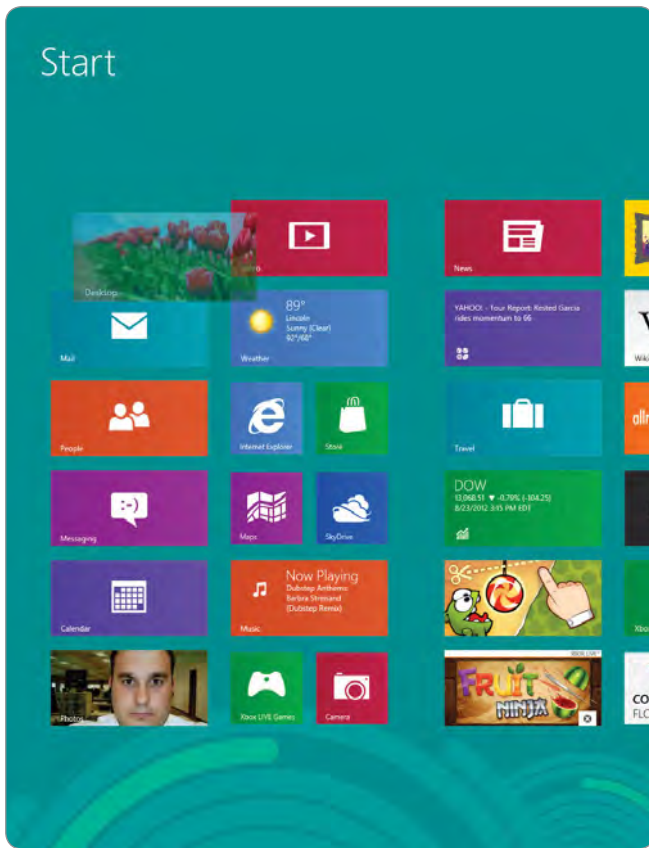
One of the first things you are going to want to do once you land on Windows 8's dynamic Start screen is click the Store tile, browse around, and download some new apps. You'll likely find a number of apps you know and love from your smartphone or tablet, so once they're installed, rearrange their tiles on the Start screen, launch them, and sign in. Import some photos,

videos, and sign into your social networks. Once the Live Tiles begin pushing the latest weather, images, social network posts, and emails to your Start screen, you'll wonder how you ever lived without them.

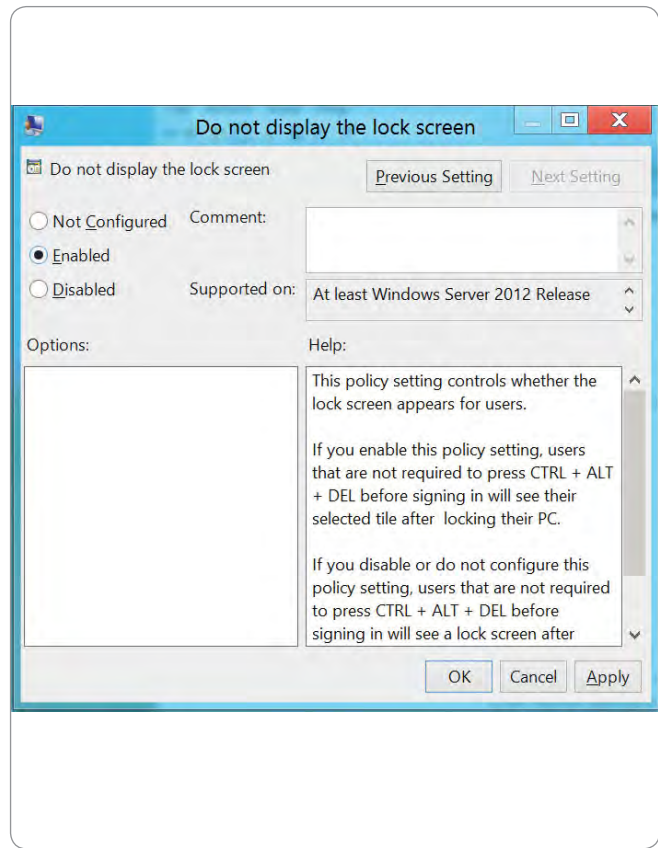
Windows 8 Personalized

To tweak the look of your Windows 8 experience, hover your mouse over the lower-right corner

of the screen to reveal the Charms bar. Then click Settings, Change PC Settings, and then navigate between the Lock Screen, Start Screen, and Account Picture menus at the top of the screen to change the look of each. Later in this article, we'll show you how to disable the Lock Screen, but if you keep it active, you can add a handful of apps to it from this screen.



Move the Desktop tile to the top-left corner of the Start Screen for faster access.



The Do Not Display The Lock Screen options dialog box gives you a lot of information about what disabling it will do.

Disable The Lock Screen

To access the PC, click anywhere on the Lock Screen and drag upward. To disable this feature, launch the Group Policy Editor by pressing the Windows Key and the "R" key simultaneously. In the Run text field, type **gpedit.msc** and click OK. Once in the Local Group Policy Editor, double-click Computer Configuration, Administrative Templates, Control Panel, Personalization and then click the Do Not Display The Lock Screen setting to highlight it in the right pane of the window. Next, double-click the setting, click the Enabled radio button, click OK, and then close the Local Group Policy Editor. Now, whenever your system starts up or wakes, you'll immediately be able to log in with your username and password.

Make The Desktop Tile More Prominent

The tile-based UI referred to as the Microsoft Design Language (formerly Metro and Modern UI) works well for some things but not as well for others. To make sure you can get to the familiar Desktop quickly, click and drag the Desktop tile from its current position to the top of the leftmost column of tiles. Now, you can quickly access Windows 8's Desktop Mode just by pressing the ENTER key.

Create A Shutdown Shortcut

In order to shut down your Windows 8 PC, you must hover your mouse over the lower-right corner of the screen to expose the charms bar, click Settings, and then click Power. You can create

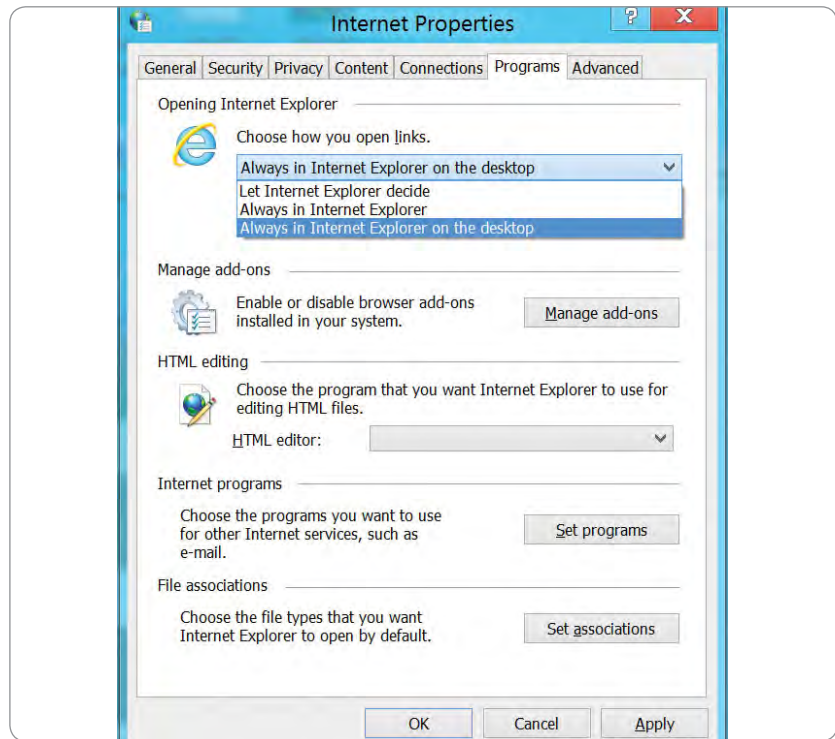
a shortcut to make shutting the system down easier, if you like. Start by clicking the Desktop tile, right-click a blank spot on the screen and click New, and then click Shortcut. In the Location text box, type **shutdown.exe -s -t 00**, and then click Next. The shortcut name should appear on the following screen where you can change it if you want. Click Finish.

Tell IE To Open Links On The Desktop

By default, if you click a Web link from the Windows 8 Start screen, it will launch Internet Explorer in a tile-based mode, which hides navigation buttons on the Address bar. To see the Address bar in this mode, you need to hover your mouse near the bottom of the page.

To be able to see both the navigation buttons *and* Address bar every time you launch IE, start typing **control panel** from the Start screen. This launches Windows 8's handy Search feature and displays a list of items that match your query. Click Control Panel from the list of displayed apps. Click View Network And Status under Network And Internet, and then click Internet Options from the lower-left corner of the Control Panel. Click the Programs tab, then highlight Always In Internet Explorer On The Desktop from the Choose How You Open Links section of the Internet Properties dialog box. Click OK to complete the operation.

It's true, you can tweak away most of what makes Windows 8 different from Windows 7. But before you do, spend some time using the new OS as it was meant to be used. You might be surprised to find that you actually come to prefer the way the new system works. ●



If you want to see navigation buttons and the Address bar for every Web page you launch, you have to tweak the Internet Properties dialog box.

No Touchscreen? No Worries

Windows 8 is optimized for a touchscreen interface, and having a touchscreen on your PC, laptop, or tablet definitely adds to the experience. But if you don't have a touchscreen, you can still approximate that sort of tactile, fingertapping interface—by using a mouse, of all things.

Microsoft's Arc Touch Mouse + Windows 8

Microsoft's Touch Mouse is like no other you've ever seen. It's sleek and flexible—*literally* flexible: Just press down on the arc and flatten the device to turn it off.

But what really sets the Arc Touch Mouse apart is its functionality. Scroll by sliding your finger up and down the center strip; flick objects (pages, etc.) by quickly brushing up or down with your fingertip. Tap the top or bottom of the strip to page up or down. Double-tap the middle (a move called a "middle-click") to do different things, depending on which application you're running. Double-tap and hold to accomplish other app-specific tasks, such as panning or auto-scrolling.

Not the same as a touchscreen, but pretty handy nonetheless.



Special Interest Group Meetings



Del Parton - retired the **Hardware SIG**. Del's **Hardware SIG**, now 27 years old, is the oldest SIG and has been held continually since the inception of PCC. Del thanked the Smiths at the September Main Meeting for hosting the SIG in their house for the past 13 years.



Dan Dolgin - (510) 895-8845
dandolgin7@comcast.net
3rd Monday of the month: 7:30pm
<http://www.pcc.org/mobile>



David Graham - (925) 997-9646
dmgraham98@yahoo.com
3rd Monday of the month: 7:30pm
<http://www.pcc.org/mobile>



Bud Gallagher - (510) 269-3623
budgall@comcast.net
2nd Saturday of the month: 1pm

**Room for more
SIGs here-
start one!**



Jan Fagerholm - (510) 213-8421
pcc4me@gmail.com
Last Saturday of the Month: 2pm

Door Prizes

Congratulations to all the members who won door prizes at the Main Meeting!

General Drawing:

Canon pouch	George Kornbluth
Droid X, The Missing Manual, from O'Reilly Press.....	Bob Kiessling
Microsoft tee shirt.....	John Cordeniz
NQ Mobile phone stand.....	Sally Holt
Onkyo tee shirt.....	Michael Wong
System Mechanic tee shirt	Lola Hunter
Windows 7: The Definitive Guide, from O'Reilly Press	Stephen Dellinger

Raffle Prize:

Tweakers Mini-Boom Portable Speakers.....	Bob Sorensen
---	--------------

Membership Dues

As of January 1, 2013, our Membership Dues have changed. There is an increase in dues as follows:

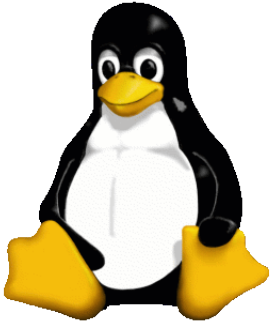
Regular.....	\$40.00
Seniors/Students.....	\$25.00

Make a check payable to PC Community in the amount listed above to:
PC Community
26799 Contessa Street
Hayward, CA 94545-3149

Dues Expiring This Month!

The following members dues expire this month:

Jan Fagerholm
Sally Holt
Paul Rogers
Michael Wong



The Penguin Partition

Linux for Human Beings

by Jan Fagerholm, PCC Penguinista

Sometimes, my focus on desktop Linux makes me overlook how the rest of the world is embracing Linux. As you may know (from my repeated crowing), Linux finds broad adoption in a wide variety of disciplines beyond simple PCs. Most recently, I have encountered several unusual and interesting applications for Linux.

We all know the Amazon.com and Google (to name two major users) run on Linux. Lesser known are some of the following.

The International Space Station (ISS) will remove Microsoft Windows from its onboard laptops and run Linux exclusively. NASA had until recently run Microsoft's Windows operating system on these laptops, however looking for something that is "stable and reliable", it opted to dump Windows in favour of Linux with the Linux Foundation helping to provide training.

Keith Chuvala of United Space Alliance, a NASA contractor that is involved in maintaining the laptops used by astronauts said, "We migrated key functions from Windows to Linux because we needed an operating system that was stable and reliable - one that would give us in-house control. So if we needed to patch, adjust or adapt, we could."

Chuvala reportedly has moved from Scientific Linux, a Red Hat Enterprise Linux derived distribution that is maintained by CERN and Fermilab, to Debian 6. He said the laptops on board the ISS might be used by only six people but those people have "very specific requirements and duties".

That the ISS runs Linux is not particularly surprising, especially given the widespread use of Linux in the scientific community, but that it took this long to dump Windows raises a few eyebrows. That said, NASA has been using Linux on its missions for some time, including plans to port it to its Mars Curiosity rover.

NASA originally opted for the VxWorks operating

system for Curiosity's landing and navigation. VxWorks, developed by Wind River Systems, is a real-time operating system used in a huge number of embedded systems. The previous Mars rovers (Sojourner, Spirit, Opportunity), Mars Reconnaissance Orbiter, and the SpaceX Dragon spacecraft used VxWorks. VxWorks also powers BMW iDrive, the Apache Longbow helicopter, and the Apple Airport Extreme and Linksys WRT54G routers (really). Later this year, Curiosity will be upgraded to a custom Debian 6 variant in order to improve its ground-based navigation capabilities and to provide improved imaging abilities.



Intergalactic penguin

On Earth's surface, Google is starting up a new Quantum Artificial Intelligence Lab to find ways to make computers much smarter so they can help solve some of the world's most challenging problems, from diseases to environmental threats.

The idea, according to Hartmut Neven, director of engineering for the Google Research team on the Google

Research Blog, is to assemble the lab at NASA's Ames Research Center using a quantum computer from D-Wave Systems, then to have the Universities Space Research Association (USRA) invite researchers from around the world to use it for advanced studies. "Our goal: to study how quantum computing might advance machine learning," Neven wrote.

The possibilities are almost endless, according to Google. "We believe quantum computing may help solve some of the most challenging computer science problems, particularly in machine learning," wrote Neven. "Machine learning is all about building better models of the world to make more accurate predictions. If we want to cure diseases, we need better models of how they develop. If we want to create effective environmental policies, we need better models of what's happening to our climate. And if we want to build a more useful search engine, we need to better understand spoken questions and what's on the web so you get the best answer."

And, of course, it will all run on Linux.



PCC Main and Executive Meeting Highlights



Secretary — Bayle Emlein
pcc@ix.netcom.com

Treasurer — Tom Smith
smith-tf@pacbell.net

Main Meeting Highlights

May 3, 2013

The meeting was called to order at 7:40 p.m. by President Chuck Horner. See Lola Hunter at the ticket table, check the email list to verify your address, for raffle tickets, door prize tickets, and collect a copy of 20 Questions.* Tonight's door prize is a set of Tweakers Mini-Boom Portable Speakers:

For Laptop, iPhone, MP3

Rechargeable lithium polymer battery

Built-in retractable audio/charging cables

Travel Pouch

Dual speaker configuration with stereo sound

Chuck introduced Stephen Dellinger.

If you have a question, we'll try to help. Write it on one of the 3" x 5" cards on Lola's table. At the end of the meeting your questions will be addressed, and hopefully answered.

Chuck encouraged everyone present to join if they are not already a member.

We need volunteers to help coordinate programs. Especially if you don't like tonight's program, suggest an improvement. Please let a member of the Executive Committee know if you're interested or just want more information.

The Spectacular Linux SIG will take place at the Smith's tomorrow at 2 p.m.

Presentation: Chuck showed Nixle: the Web site that lets you use your computer to address crime that is not on your computer. Chuck demonstrated this site: put in an address and you'll find out what the police department knows--not just the headlines that the newspapers report. It's more like a police blotter than a newspaper. You can choose which emergency agencies and what areas to receive information about.

CrimeMapping.com shows various categories of crime within a user-specified radius. The user can also specify whether he wants real-time, daily, or weekly reporting.

If you haven't gone to AccessHayward.com, you should. If you don't live in Hayward, try GoRequest.com. You can get information about the city you are in, submit a compliment, a complaint, question, or problem. The structure helps direct users to the correct office in the city. Many citizens do not know which city office would handle their problem, and many city workers do not know how to reassign comments incorrectly sent to them. The AccessHayward manager knows that some processes take longer than others. Timelines are allocated and tracked so that chores get done in a timely manner. Hayward city officials would be happy to teach neighboring cities how to set up a similar program. Call Stacie Bristow for more information. The basic software comes from a company called City Outreach that provides individualized templates.

Chuck gave some examples of how this site is making Hayward more efficient. Sally Holt asked how to use the AccessHayward site to help win a grant for a dog park.

Chuck pointed out that technology is only as good as it connects us. Many uses of technology now cause people to become detached from each other.

*Chuck compiled a list of 20 technology trivia questions, distributed at the beginning of the meeting. The group reviewed and discussed the answers. In the course of the discussion, Chuck pointed out the importance of proper ergonomics to avoid injury and pain and had a neat trick for avoiding dragging your thumbs across the trackpad of your laptop.

Chuck thanked George Kornbluth for getting the refreshments ready to support conviviality and the group took a break to partake in same.

Questions for The Experts: Chuck is having trouble with Google Calendar. Bud Gallagher suggested reinstalling.

Elsie reminded attendees to go to the O'Reilly Web site to look for books for her to order for prizes.

The meeting was adjourned at 9:27 p.m.

Respectfully submitted,

Bayle Emlein, Secretary

Executive Committee Meeting Highlights

May 18, 2013

The Meeting was called to order at 2:13 p.m.

The April minutes were approved as printed.

Members present: Bayle Emlein, Jan Fagerholm, Diane George, Sally Holt. Absent: Chuck Horner, Sid Jordan, Elsie Smith, Tom Smith.

Old Business: The suggestions for updates to raffle requests will be emailed.

President's Report - Chuck Horner: Not present, no report.

Executive Vice President - Sally Holt: Nothing special to report.

Treasurer - Tom Smith: As of May 18, 2013

Checking Account \$762.11

It was noted that refreshments at the Main Meeting are a major expense.

Secretary - Bayle Emlein: Nothing special to report.

VP Clubhouse - Sid Jordan: No report.

VP Marketing - Vacant:

VP Membership - Jan Fagerholm: Jan has converted the membership database to Excel. We have a total of 39 members as of May 18, 2013.

VP Newsletter - Elsie Smith:

May 25, 2013, Saturday midnight, June Newsletter submission deadline.

June 22, 2013, Saturday midnight, July Newsletter submission deadline.

July 20, 2013, Saturday midnight, August Newsletter submission deadline.

Special Projects - Bayle Emlein: Nothing special to report.

Webmaster - Diane George: Diane will use the new Excel database to get Newsletter information out to members as soon as it is ready each month.

Calendar: Check the Web site for the latest updates.

Programs:

June: Stay tuned.

Raffle Prize:

June: Lexar 32 Gb 3.0 Flash Drive, with retractable connector and thumb slide

<http://www.lexar.com/products/lexar-jumpdrive-s73usb-30-flash-drive>

July: 32GB micro SDC card with adapter Class 10 from ADATA

August: \$20 gift card from Fry's, with tax.

September: Phillips Universal remote.

New Business:

Sally suggested creating a You Tube video as a PSA. It will be discussed at the Main Meeting.

The Southwest Computer Conference will take place the weekend of June 21-23 at Cal Poly Pomona.

The EC will be on vacation in August. Pressing business will be handled via email.

The meeting was adjourned at 3:16 p.m.

Date and Time of Next Meeting: Saturday, June 15, 2013 at 2 p.m.; 28924 Ruus Road, Hayward California.

Respectfully submitted,

Bayle Emlein, Secretary





Happy Father's Day!

PC Community
 26799 Contessa Street
 Hayward, CA 94545-3419



June 2013

Sunday Monday Tuesday Wednesday Thursday Friday Saturday

Check the calendar at www.pcc.org for up- to-date information!		See Page 6 for SIG Meeting information.		1			
2	3	4	5	6	7 7:30 pm Main Meeting	8 Windows 7 SIG on Sabbatical	
9	10	11	12	13	14 FLAG DAY  Flag Day	15 2 pm-Exec. Committee Mtg.	
 Father's Day		17	18	19	20	21	22
23	24	25	26	27	28	29	29 2 pm-Linux SIG
30							

The **July 2013 Main Meeting** will be at 28924 Ruus Road, Hayward CA, on **July 5, 2013** at 7:30 P.M.